

FOR VACUUM OR PRESSURE

APPLICATIONS

- Veterinary Suction
- Dental Suction
- Fish Farm Aeration
- Milking Machines
- Printing Presses
- Paper Processing
- Laboratory
- Chemical Agitation
- Plating Tanks
- Lobster Tank Aeration
- Suction Gripping
- Pump Priming
- Many more

FEATURES

- Quiet Operation
- Direct Coupled (no belts) flexible coupling with guard
- Air intake filter with replaceable paper cartridge
- Vacuum Relief Valve
- Compound Gauge
- Rubber vibration mounts
- Economically replaceable carbon vanes
- Pump Cooling Fan with shroud
- Single phase motors and optional 3 phase
- Convertible for vacuum or pressure service
- Standard 1/60/115-230V motors, 1800 RPM, IP 54 rated, CSA/UL certified



RV-16



RV-40

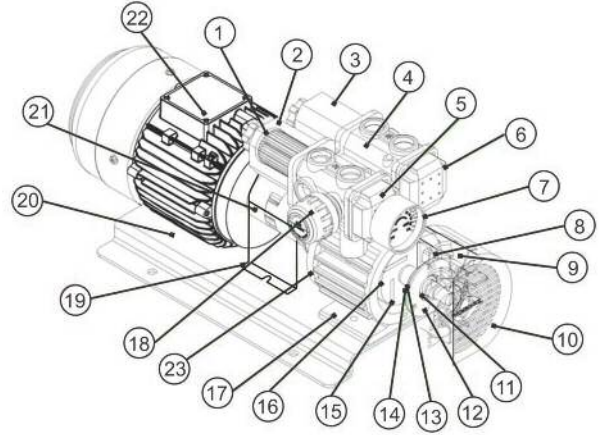


RV-25

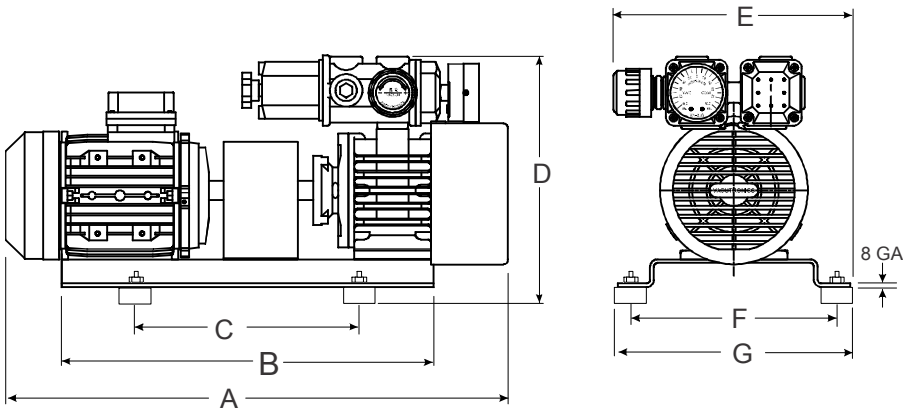


CONSTRUCTION FEATURES

- | | |
|--------------------------|---|
| 1) INTAKE FILTER ELEMENT | 13) GASKET |
| 2) ELEMENT ACCESS COVER | 14) WASHER |
| 3) OUTLET COVER | 15) CARBON VANE |
| 4) OUTLET SILENCER | 16) ROTOR |
| 5) INLET COVER | 17) PUMP CASING |
| 6) OUTLET COVER | 18) VACUUM REGULATOR |
| 7) COMPOUND GAUGE | 19) COUPLING GUARD |
| 8) PUMP FRONT COVER | 20) STEEL BASE PLATE |
| 9) COOLING FAN | 21) DRIVE COUPLING |
| 10) FAN SHROUD | 22) MOTOR |
| 11) FRONT BEARING | 23) REAR COVER |
| 12) BEARING RETAINER | 24) RUBBER VIBRATION MOUNTS (NOT SHOWN) |



DIMENSIONS

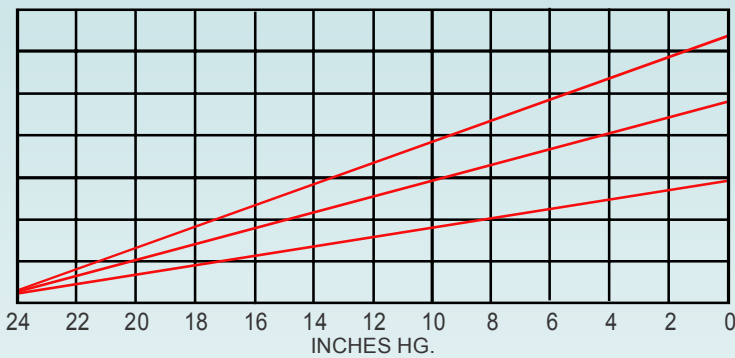


DIM.	MODEL		
	RV-16	RV-25	RV-40
A	19.63	21.88	26.5
B	14.38	15.25	18.5
C	12	9.5	12.25
D	10.75	11.25	11.75
E	10.88	11.13	11.13
F	8.13	8.38	8.63
G	9	10	10.25
CON.	3/4"	3/4"	3/4"

* DIMENSIONS ARE IN INCHES
* INLET CONNECTIONS ARE F. NPT

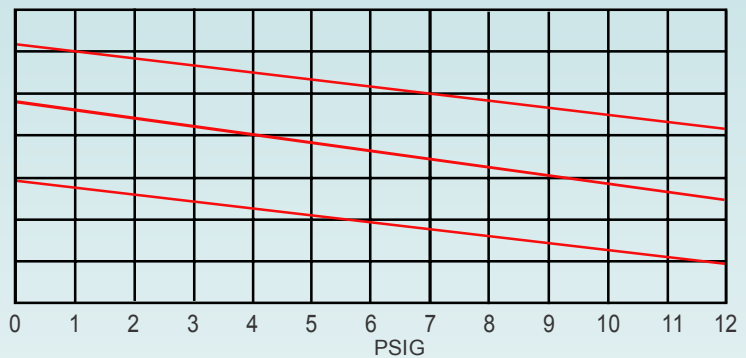
PERFORMANCE CURVES

VACUUM



CFM

PRESSURE



MODEL	MAXIMUM VACUUM INCHES HG.	MAXIMUM PRESSURE PSIG	FREE AIR CFM	MAXIMUM CONTINUOUS VACUUM- IN HG.	MAXIMUM CONTINUOUS PRESS - PSIG	HP	MOTOR AMPS 1/60/115-230V	WEIGHT LBS.	NOISE LEVEL dBa
RV-16	25" HG.	12 PSIG	9.8	18" HG	9 PSIG	1/2	6.0 / 3.1	48	68
RV-25	26" HG.	12 PSIG	16.9	18" HG	9 PSIG	1	11 / 5.5	57	70
RV-40	26" HG.	12 PSIG	24	18" HG	9 PSIG	2	18.9 / 9.5	81	76

NOTES

- Standard motor voltage is 1/60/115-230V. 3 Phase units are available on request.
- Noise levels are based on vacuum service. Pressure service will increase levels.



www.airpowerproducts.com

Air Power Products Limited

Tel: 519-622-2034

Fax: 519-622-1949

E-Mail: info@airpowerproducts.com

191 Shearson Crescent, Cambridge, Ontario N1T 1J5

APPL-QAF-141